

## 9-13 Hallenstein Street QUEENSTOWN

### APARTMENT 16

#### Floor area

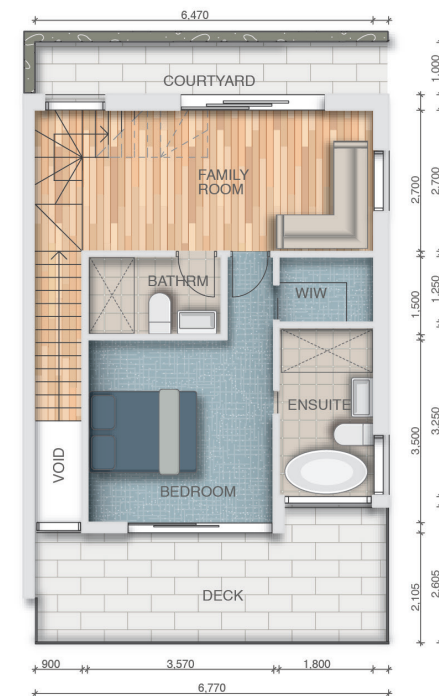
Internal:	193.4 sqm
Courtyard:	6.8 sqm
Deck:	50.6 sqm
Carparking:	39.0 sqm
Storage:	2.6 sqm
<b>Total:</b>	<b>292.4 sqm</b>

#### Colour code

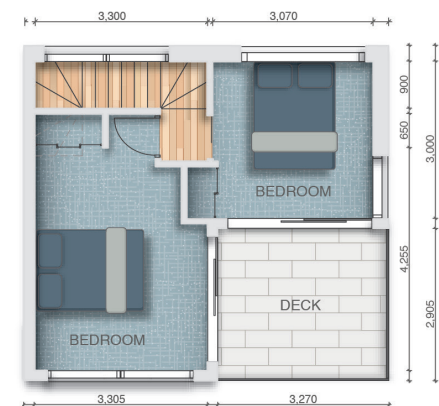
Carpet:	
Timber:	
Bathroom tiles:	
External tiles:	
Storage:	
Carparking:	



LEVEL 3



LEVEL 4



LEVEL 5

